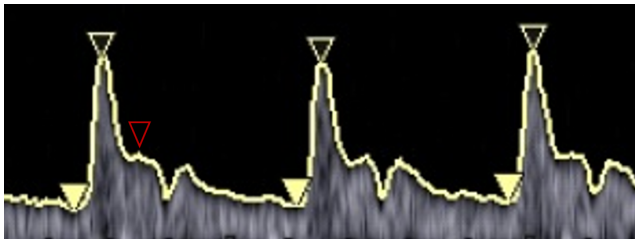


---

**Reply**

We thank Dr Debs Diniz for her appreciation of our systematic review. She is indeed correct to point out that the yellow arrow in supplementary figure 2 of the review

corresponds to the systolic phase of the cardiac cycle rather than the diastole phase, and we are grateful for this opportunity to correct the figure. According to the work of Holdsworth *et al.* on carotid artery Doppler, the diastolic phase of a cardiac cycle starts shortly after the dirotic notch of the carotid artery Doppler waveform<sup>1</sup>. The location of the second systolic peak was also shown correctly in recent work by Dr Debs Diniz's group<sup>2</sup>. Accordingly, the correct version of the supplementary figure 2 is presented here (Figure 1). Nevertheless, it is important to underline that calculation of the peak ratio remains unchanged. We share Dr Debs Diniz's hope that more research investigating the association of ophthalmic artery Doppler with various cardiac manifestations of pre-eclampsia will be carried out in the future<sup>3</sup>.



**Figure 1** Ophthalmic artery Doppler waveform showing peak systolic velocity (hollow yellow arrow), second systolic peak velocity (hollow red arrow), and end-diastolic velocity (yellow arrow).

E. Kalafat<sup>1,2,3\*</sup>, A. Laoreti<sup>1,2</sup>, A. Khalil<sup>1,4</sup>,  
F. da Silva Costa<sup>5</sup> and B. Thilaganathan<sup>1,4</sup>  
<sup>1</sup>Fetal Medicine Unit, St George's University Hospitals  
NHS Foundation Trust, London, UK;  
<sup>2</sup>Ankara University Faculty of Medicine,  
Department of Obstetrics and Gynecology,  
Ankara, Turkey;  
<sup>3</sup>Middle East Technical University,  
Department of Statistics, Ankara, Turkey;  
<sup>4</sup>Molecular & Clinical Sciences Research Institute,  
St George's University of London, London, UK;  
<sup>5</sup>Department of Obstetrics and Gynaecology,  
Monash University and Monash Ultrasound for Women,  
Melbourne, Victoria, Australia  
\*Correspondence.  
(e-mail: mail@erkankalafat.com)

DOI: 10.1002/uog.20165

## References

1. Holdsworth D, Norley C, Frayne R, Steinman DA, Rutt BK. Characterization of common carotid artery blood-flow waveforms in normal human subjects. *Physiol meas* 1999; 20: 219–240.
2. Aires Rodrigues de Freitas M, Vieira da Costa A, Alves de Medeiros L, da Silva Garrote Filho M, Lemos Debs Diniz A, Penha-Silva N. Are There Differences in the Anthropometric, Hemodynamic, Hematologic, and Biochemical Profiles between Late and Early-Onset Preeclampsia? *Obstet Gynecol Int* 2018; 2018: 9628726.
3. Borges VTM, Zanati SG, Peracoli MTS, Poiati JR, Romao-Veiga M, Peracoli JC, Thilaganathan B. Maternal left ventricular hypertrophy and diastolic dysfunction and brain natriuretic peptide concentration in early- and late-onset pre-eclampsia. *Ultrasound Obstet Gynecol* 2018; 51: 519–523.